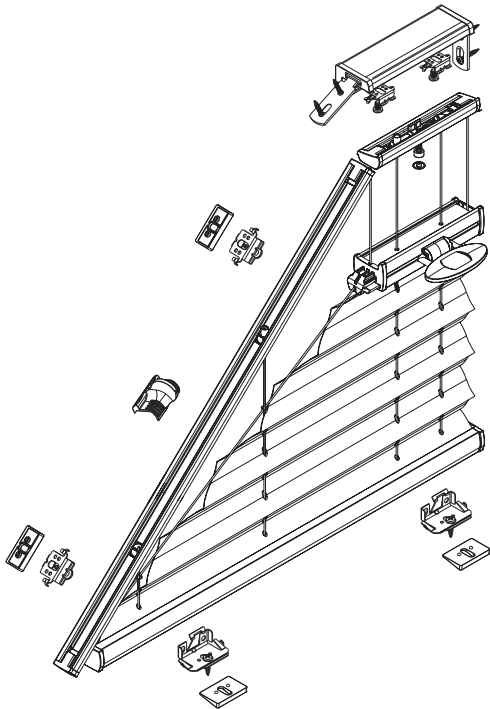


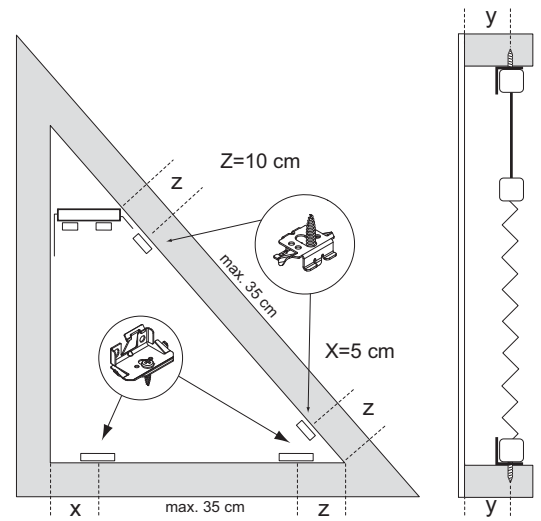
Installation TopFix / RecessFix [R1]

- Do not damage the product when using a sharp knife to open the packaging!
- Fitting screws: Use a size-2 screwdriver (POZIDRIVE) or use an electric screwdriver at it's lowest torque.
- Rail removal: Use a flat screwdriver of max. 6 mm wide.
- Only use the original screws enclosed, to prevent malfunctioning from using too thick screw heads!

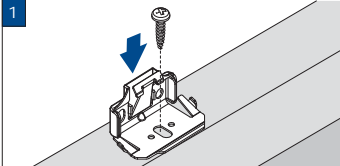
Model
PB70/75
PB71/76



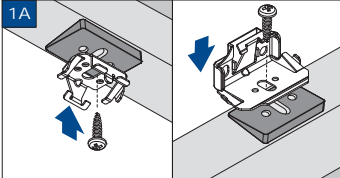
Product width	Number of parts								
0 - 80 cm									
	2	var	var	2	1	2	var	var	4
81 - 115 cm	3	var	var	2	1	2	var	var	4
116 - 150 cm	4	var	var	2	1	2	var	var	4



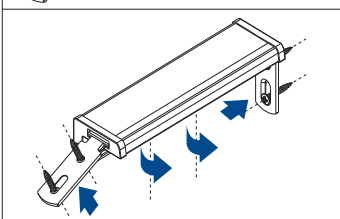
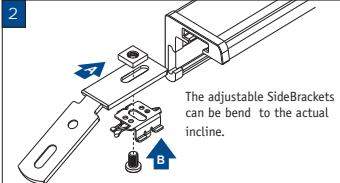
Clip installation (high rail)



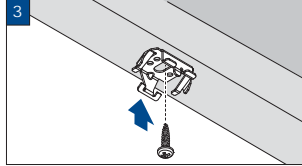
Wedge (11°) for slanting window frames



Profile installation

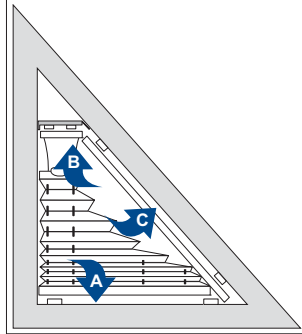


Clip installation (bottom rail)

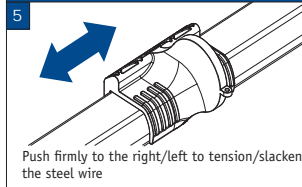


Installation sequence

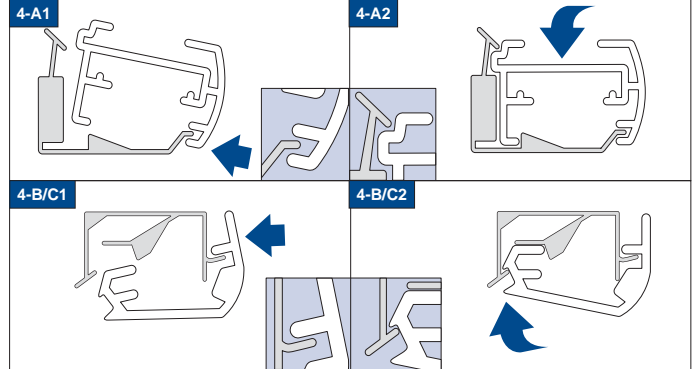
4 Note: if necessary, before clicking the rail into place, slacken the steel wire. After clicking, place cover on the bottom clips.



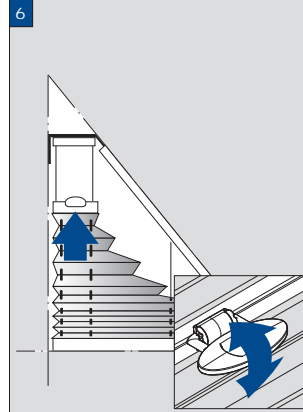
Tensioning/slackening the steel wire



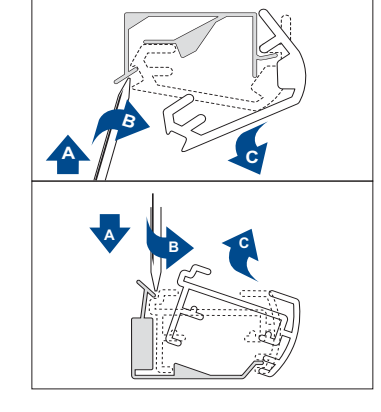
Rail installation sequence on Clips

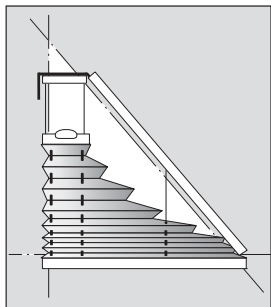


Operation



Removal

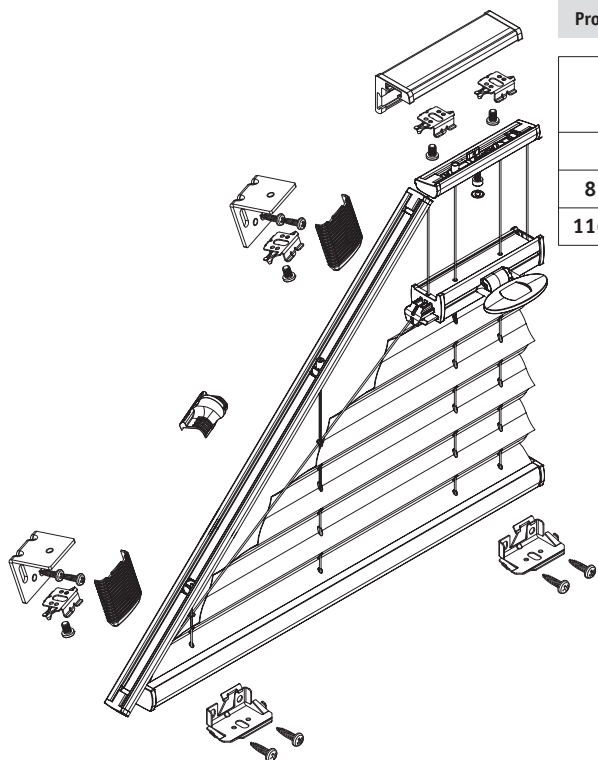




FaceFix installation to a window frame / wall [F1]

- Do not damage the product when using a sharp knife to open the packaging!
- Fitting screws: Use a size-2 screwdriver (POZIDRIVE) or use an electric screwdriver at it's lowest torque.
- Rail removal: Use a flat screwdriver of max. 6 mm wide.
- Only use the original screws enclosed, to prevent malfunctioning from using too thick screw heads!

Model
PB70/75
PB71/76



Product width	Number of parts								
0 - 80 cm									
81 - 115 cm	3	var	var	var	1	2	2	var	var
116 - 150 cm	4	var	var	var	1	2	2	var	var
	5	var	var	var	1	2	2	var	var

