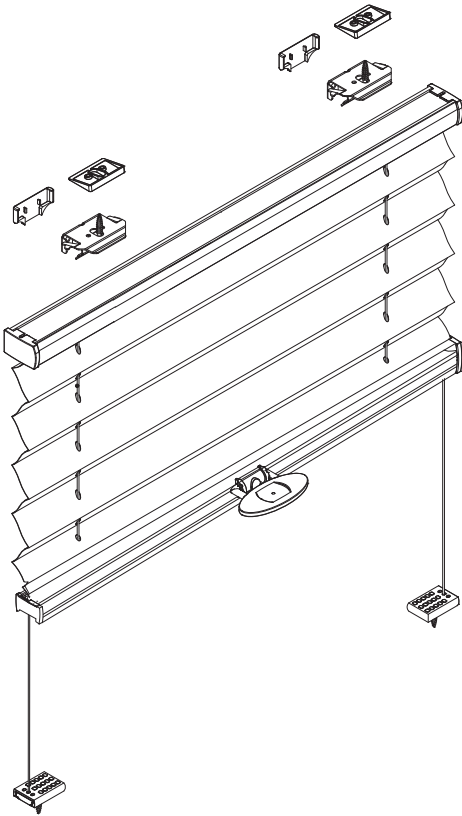


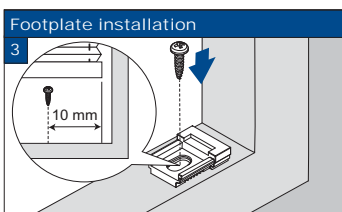
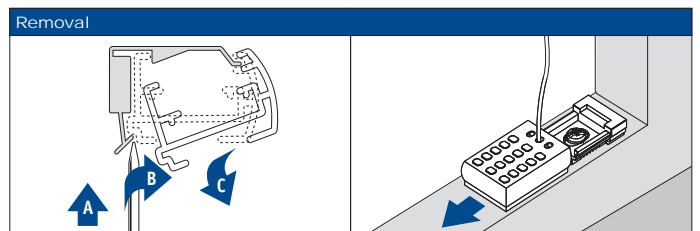
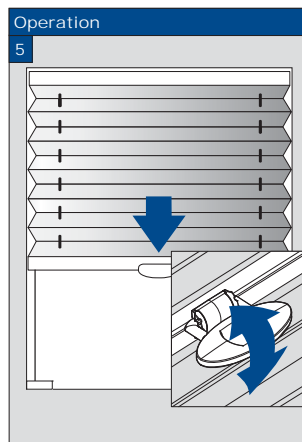
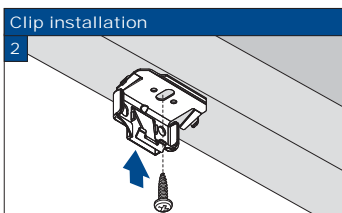
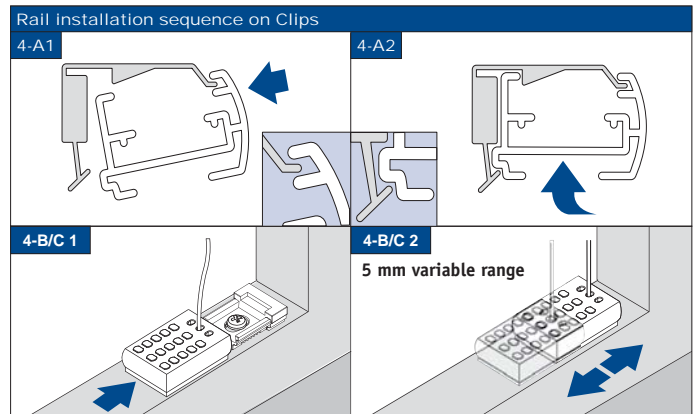
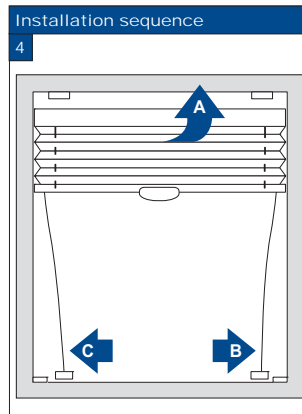
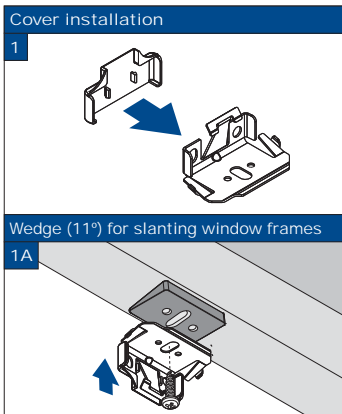
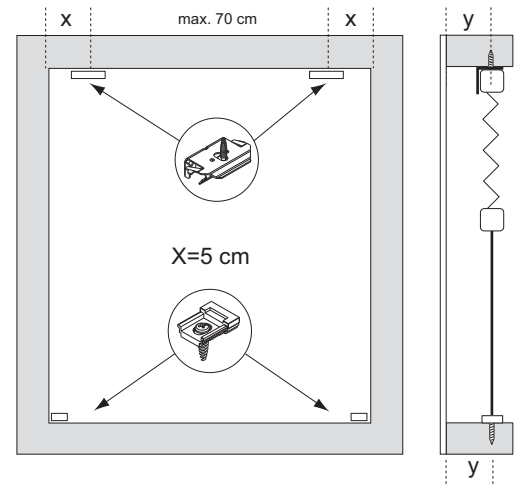
Installation TopFix / RecessFix [R1]

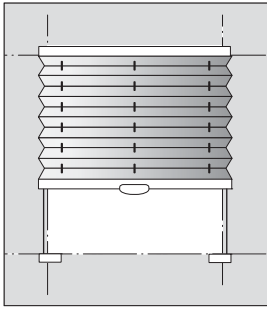
- Do not damage the product when using a sharp knife to open the packaging!
- Fitting screws: Use a size-2 screwdriver (POZIDRIVE) or use an electric screwdriver at it's lowest torque.
- Rail removal: Use a flat screwdriver of max. 6 mm wide.
- Only use the original screws enclosed, to prevent malfunctioning from using too thick screw heads!

Model
BB10
BB15



| Product width | Number of parts | | | | |
|---------------|-----------------|---|---|---|---|
| 0 - 80 cm | | | | | |
| 0 - 80 cm | 2 | 2 | 2 | 2 | 4 |
| 81 - 150 cm | 3 | 3 | 3 | 2 | 5 |

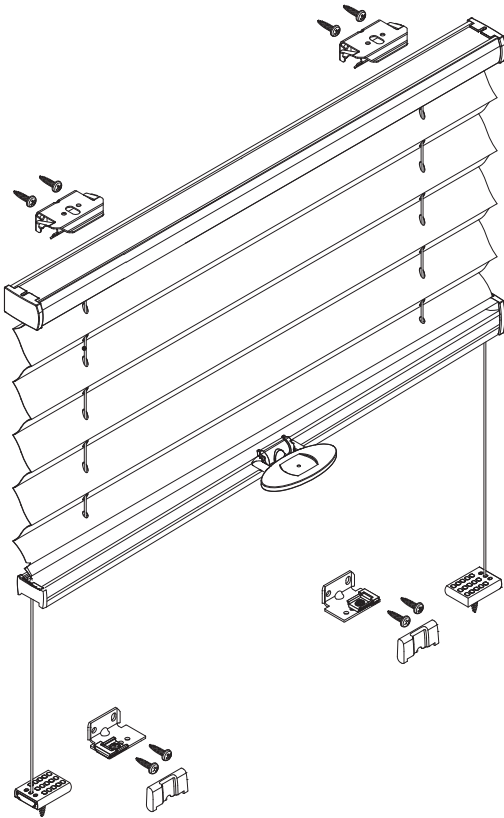




FaceFix installation to a window frame / wall [F1]

- Do not damage the product when using a sharp knife to open the packaging!
- Fitting screws: Use a size-2 screwdriver (POZIDRIVE) or use an electric screwdriver at it's lowest torque.
- Rail removal: Use a flat screwdriver of max. 6 mm wide.
- Only use the original screws enclosed, to prevent malfunctioning from using too thick screw heads!

Model
BB10
BB15



| Product width | Number of parts | | | | | |
|---------------|-----------------|---|---|----|---|--|
| 0 - 80 cm | | | | | | |
| | 2 | 2 | 2 | 8 | 2 | |
| 81 - 150 cm | | | | | | |
| | 3 | 2 | 2 | 10 | 2 | |

